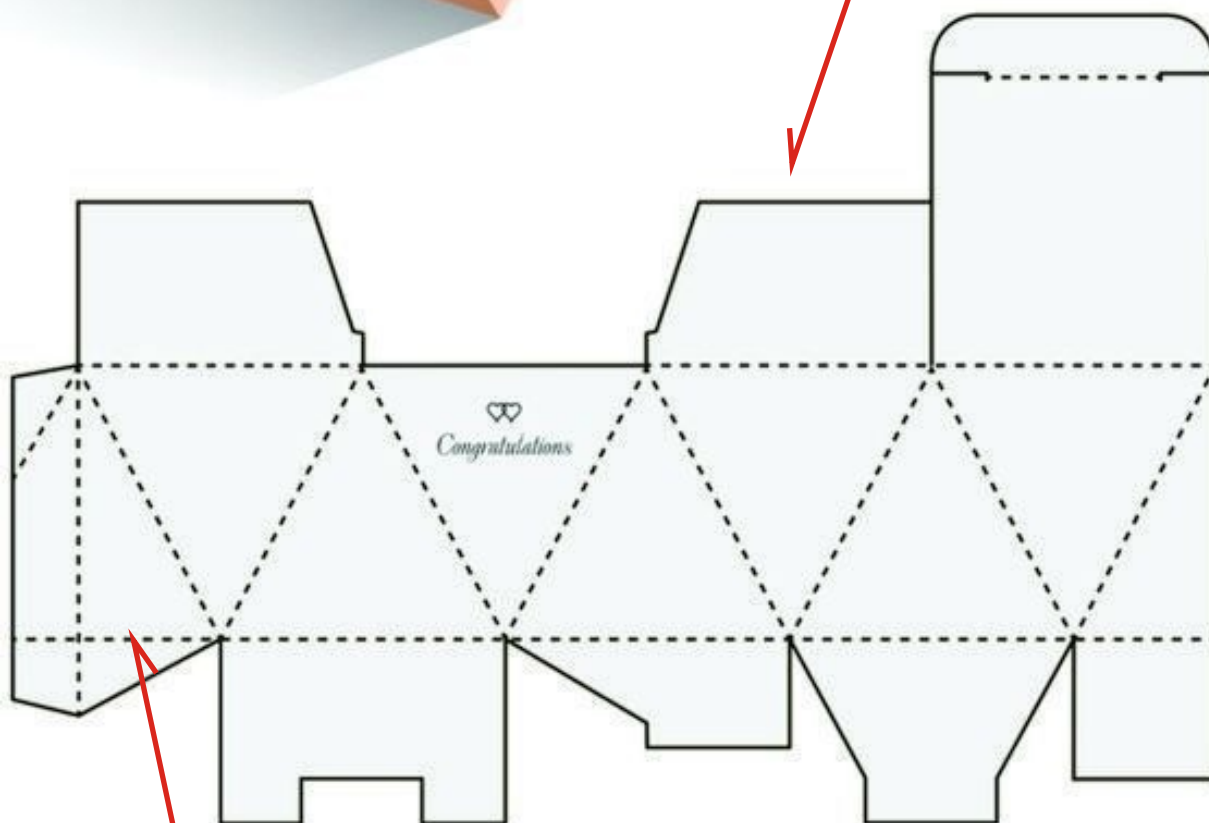


PREDLOHY NA JEDNODUCHÉ DIZAJNOVÉ KRABIČKY

HOTOVÝ VÝROBOK



PLÁŠŤ PRED ZLOŽENÍM

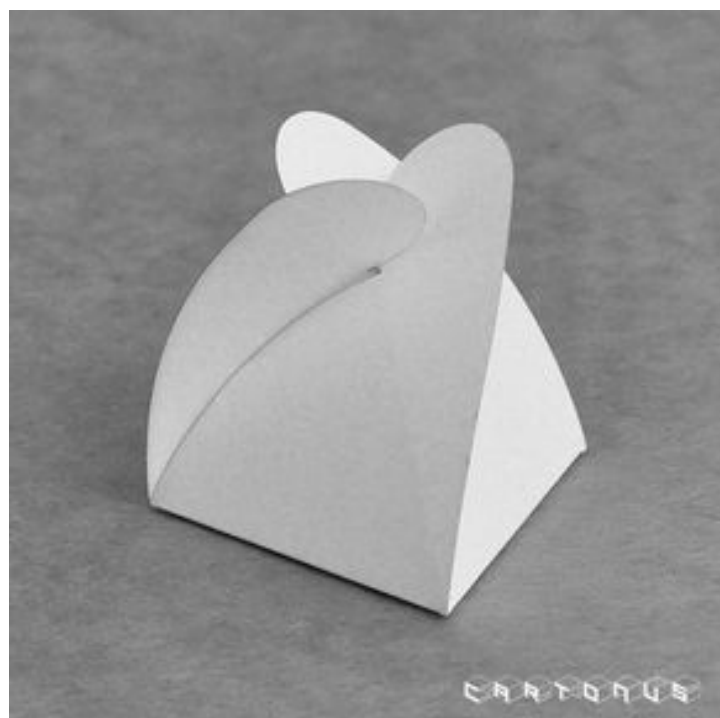
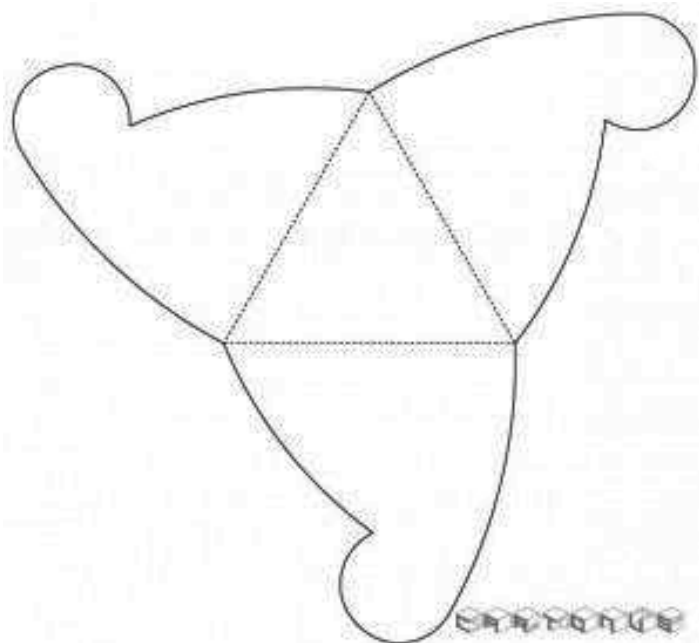
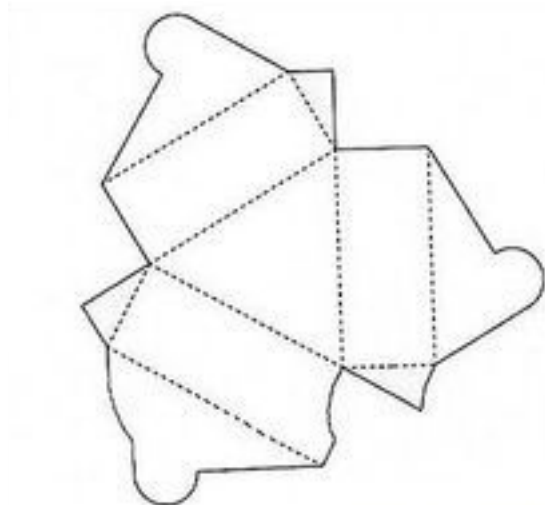
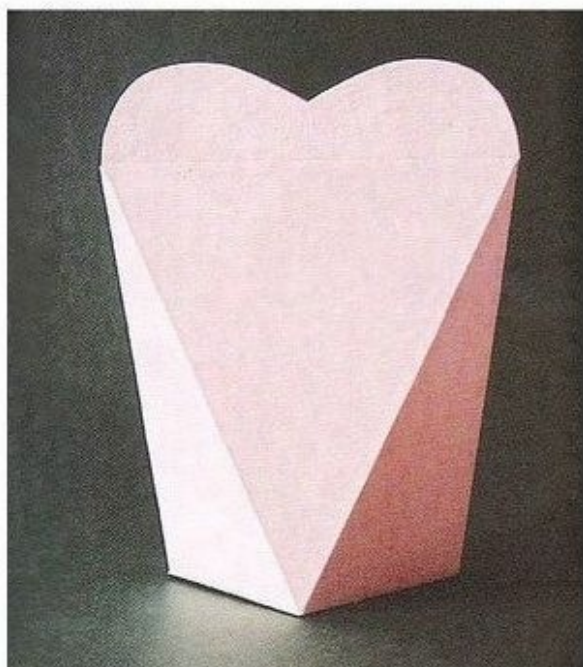
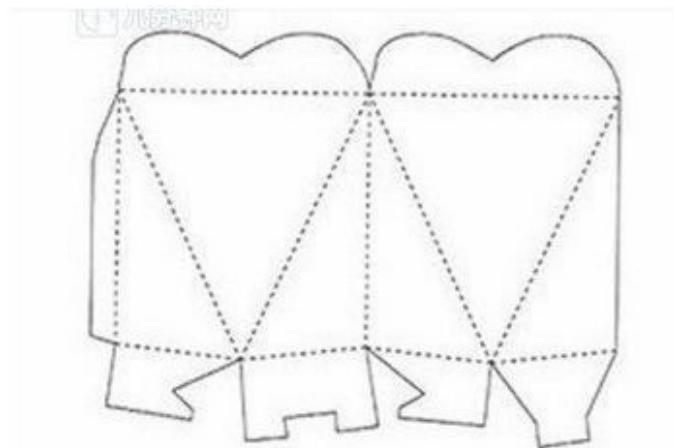


LINKY (- - - - -), KDE SA BUDE PLÁŠŤ OHÝBAŤ

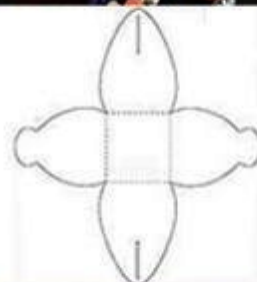
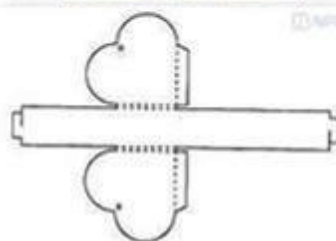
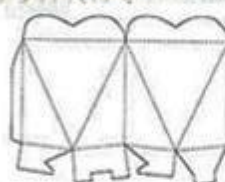
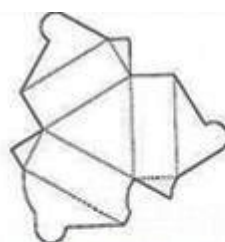
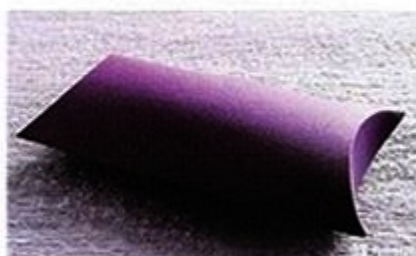
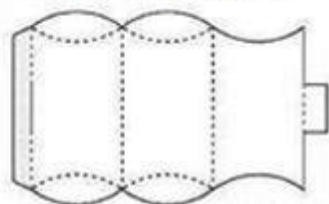
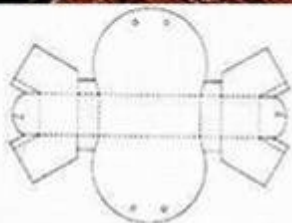
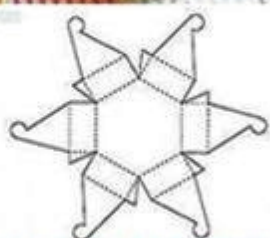
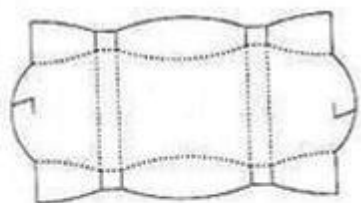
PO NAKRESLENÍ A VYSRIHnutí PLÁŠŤA TREBA TIETO LINKY
POMOCOU PRAVÍTKA A TUPŠIEHO NOŽA (napr. príborového)
NARYHOVAŤ, ABY OHYBY BOLI ČISTÉ A ROVNÉ

(niektoré krabičky stačí iba poskladať, no niektoré spoje bude treba poistiť
aj malým množstvom disperzného lepidla)

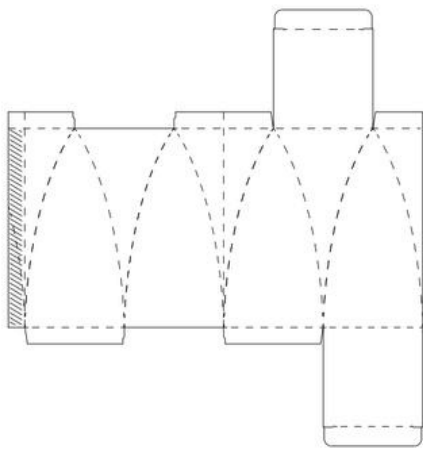
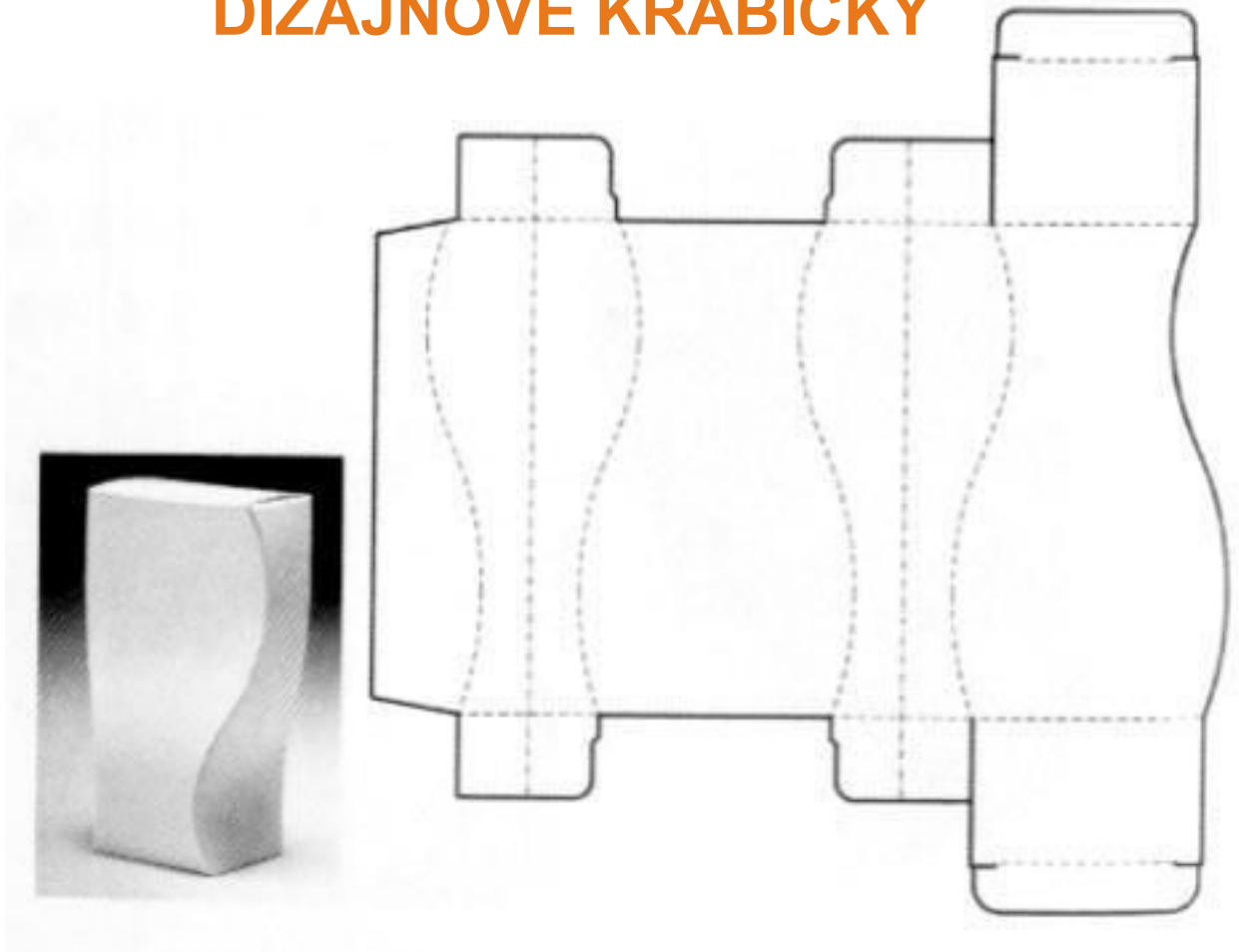
PREDLOHY NA JEDNODUCHÉ DIZAJNOVÉ KRABIČKY



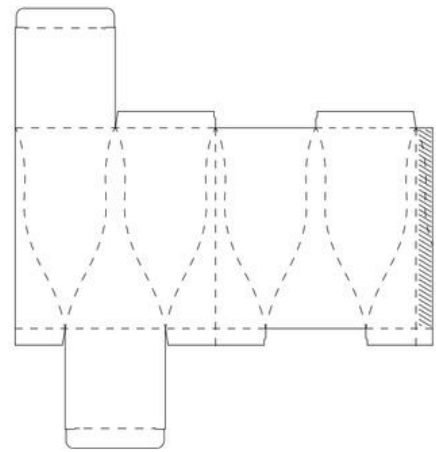
PREDLOHY NA JEDNODUCHÉ DIZAJNOVÉ KRABIČKY



PREDLOHY NA NÁROČNEJŠIE DIZAJNOVÉ KRABIČKY



Page 60
Packaging & Design | designpackaginginc.com



Page 58
Packaging & Design | designpackaginginc.com



ĎALŠIE NÁMETY

Sú bez šablóny plášt'a-treba použiť priestorovú predstavivosť a doterajšie poznatky z **geometrie** a **matematiky**

